

# HOUSING OURSELVES IN THE WELLBEING ECONOMY



**BLENDED CONFERENCE | IN-PERSON AND ONLINE | FRIDAY 14 FEBRUARY 2025**

**LOCATION: WECREATE, CLOUGHJORDAN  
ECOVILLAGE, CO. TIPPERARY - E53 VP86.**

**THREE SESSIONS OF THE EVENT WILL BE HELD  
ZOOM FOR ON-LINE PARTICIPATION.**

**Housing is vital to the well-being of individuals and communities, yet the current speculative, profit-driven model fails to address key challenges such as affordability, sustainability, and social cohesion.**

**Hosted by Cloughjordan Co-Housing and the Irish Hub of the Wellbeing Economy Alliance, this event builds on last year's focus group discussions and the Housing session at the Rethinking Growth event in Dublin. Insights will contribute to a paper on Housing in the Wellbeing Economy**

**09.30 - WELCOME AND REFRESHMENTS**  
**10.00 - SESSION 1**  
**THE HOUSING CRISIS & COMMUNITY LED HOUSING**  
**11.30 - BREAK**  
**12.00 - SESSION 2**  
**CREATIVE PLACE MAKING**  
**13.30 - LUNCH**  
**14.15 - TOUR OF THE ECOVILLAGE**  
**15.30 - SESSION 3**  
**BUILDING SUSTAINABLE COMMUNITIES**  
**17.00 - CLOSE**

**COST: ONLINE FREE**

**IN-PERSON: €15.00 TO €50.00 (INCLUDES LUNCH)**



**Cloughjordan Ecovillage**, Ireland's largest community-led housing initiative, is home to over 100 residents in 50+ high-performance green homes. It features allotments, community gardens and woodlands, a working farm, a community enterprise centre, and a district heating system. It also serves as a destination for learning, hosting courses and workshops on sustainability and community living.

[www.thevillage.ie](http://www.thevillage.ie)

## **CORTIBUTORS**

**PEADAR KIRBY, RORY HEARNE, CAROLINE WHYTE, PAUL UMFREVILLE, TOM O'DONNELL, MICHAEL WEATHERHEAD, ALI GREHAN, ROSIE LYNCH, GRAHAM LIGHTFOOT, MATT BAKER, ARIANE BURGESS, GAVIN HARTE, ANNE-MARIE FULLER, CORRIN FOX, PAUL UMFREVILLE, MICK FORDE-BRADLEY, ROB CASS, DAVIE PHILIP**

**SEE BIOS ON PAGE 3**

[www.cloughjordancohousing.coop](http://www.cloughjordancohousing.coop)

# HOUSING OURSELVES

## THE HOUSING CRISIS COMMUNITY LED HOUSING CREATIVE PLACE MAKING BUILDING SUSTAINABLE COMMUNITIES



Co housing Ringkøbing, Denmark • AART Architects

### Session 1 - 10.00 - 11.30

#### THE HOUSING CRISIS & COMMUNITY LED HOUSING

This session will examine the root causes of the current housing crisis, introduce the Wellbeing Economy and highlight community-led housing as a potential approach for delivering affordable homes while fostering stronger, more connected, and resilient communities

#### Contributors

**Peadar Kirby (Convenor), Rory Hearne, Caroline Whyte, Paul Umfreville, Tom O'Donnell, Michael Weatherhead**

### Session 2 - 12.00 - 13.30

#### CREATIVE PLACEMAKING

This session will delve into how community-led housing can be advanced, highlighting cooperative approaches such as co-housing and community land trusts as key enablers within the Wellbeing Economy. It will also explore the role of creative placemaking in fostering participation, inclusion and connection to place.

#### Contributors

**Ali Grehan (Convenor), Anne-Marie Fuller, Rosie Lynch, Graham Lightfoot, Matt Baker, Ariane Burgess**

### Session 3 - 15.30- 17.00

#### BUILDING SUSTAINABLE COMMUNITIES

This session will explore modular offsite construction and self-build approaches for affordable, sustainable, and inclusive housing. It will also highlight the role of reusing derelict buildings in rural regeneration and community-led housing.

#### Contributors

**Gavin Harte (Convenor), Anne-Marie Fuller, Corrin Fox, Mick Forde-Bradley, Paul Umfreville, Rob Cass**



### 13.00 - Lunch

A delicious, locally sourced lunch in the fFood Hub prepared by Johanna at The Night Orchard,



### 14.15 - Tour of the Ecovillage

After lunch, enjoy a short guided tour of Ireland's largest community-led housing project.

**“Community-Led Housing is an example of bottom-up, active citizenship at its best, with the potential to put the humanistic perspective of housing provision centre stage, with communities and citizens at the heart of neighbourhood development, embracing the idea of homes as a social good.”**

Michael D. Higgins, President of Ireland

## SPEAKERS BIOS

**Peadar Kirby** is Professor Emeritus of International Politics and Public Policy at the University of Limerick, Ireland. He has published extensively on Ireland's development model, globalization, vulnerability and resilience, and the low-carbon transition. A resident of Cloughjordan Ecovillage since 2009, Peadar is actively involved in its education and research group.

**Rory Hearne** is an Irish Social Democrats politician and TD for the Dublin North-West constituency. Previously, he was an Associate Professor and Senior Lecturer in Social Policy in the Department of Applied Social Studies at Maynooth University. He is the author of the best-selling books *Gaffs: Why No One Can Get a House*, and *What We Can Do About It* (HarperCollins Ireland, 2022) and *Housing Shock: The Irish Housing Crisis and How to Solve It* (Policy Press, 2020).

**Caroline Whyte** has a background in ecological economics and does research and advocacy for Feasta, the Foundation for the Economics of Sustainability. She is a core member of the Wellbeing Economy Hub for Ireland. Her current work includes research on GDP-growth dependency in the financial system and its effects on the housing market in Ireland and elsewhere. She lives in central France.

**Paul Umfreville** is a Town Planner and was Head of Scrutiny at a London Council, bringing accountability and community engagement into governance processes. He recently completed a PhD in political science at Technological University Dublin, with research comparing historic and more recent public policymaking processes as responses to housing crisis.

**Tom O'Donnell** is a founding director at SOA.ie. He studied architecture at UCD and Cambridge University and has extensive experience in architectural practice in the public and private sectors. In 2020-21 he co-authored *Roadmapping a Viable Community-Led Housing Sector for Ireland*.

**Michael Weatherhead** is a Co-Founder of the Wellbeing Economy Alliance (WEAll) and serves as its Development Lead. Previously, Michael spent over a decade as Managing and International Director of the consulting arm of the New Economics Foundation (NEF).

**Davie Philip** is a sustainable community advocate and facilitator working with Cultivate The Sustainable Ireland Coop. He is a founding-member of Cloughjordan Ecovillage, a director of Cloughjordan CoHousing and a coordinator of the Wellbeing Economy Hub for Ireland.

**Ali Grehan** is the former Dublin City Architect and is the chair of the Irish Green Building Council Board. She recently completed an MSC in Climate Change: Policy Media and Society at DCU where her final dissertation focused on collaborative planning and placemaking. Ali is a new resident of Cloughjordan Ecovillage.

**Rosie Lynch** is the Creative Director of *Workhouse Union*, a community co-design and creative placemaking organisation based in Callan, Co. Kilkenny. Rosie is a member of the team leading the ten-year *Nimble Spaces/Inclusive Neighbourhood* community-led housing project in Callan.

**Matt Baker** is the CEO and co-founder of The Stove Network, an arts and community organisation based in Dumfries, Scotland. He is actively involved in What We Do Now (WWDN), a creative placemaking network that connects artists and community organisations to foster creative activities and projects aimed at driving social change and enhancing community wellbeing.

**Ariane Burgess** has been the Scottish Green Member of the Scottish Parliament (MSP) for the Highlands and Islands region since 2021. She is the convener of the Scottish Parliament's Local Government, Housing and Planning Committee. Prior to politics, Ariane has been involved in projects including locally-owned renewable energy, cohousing, community woodlands and car share schemes.

**Graham Lightfoot** is a Director and Company Secretary of Cloughjordan CoHousing. He has been involved in a range of EU multinational projects on the above topics. Graham played a key role in the establishment of GoCar, which now provides 1,000 vehicles for short term hire located in cities and towns throughout Ireland.

**Gavin Harte** is a sustainability entrepreneur who has launched numerous sustainability-focused start-ups throughout his career. A founder of the Cloughjordan Ecovillage, he also served as National Director of An Taisce and worked as a CSR consultant with Business in the Community Ireland. Gavin now leads ESD Training, providing sustainability consultancy services, and serves as a Director of Cloughjordan CoHousing progressing the Village Homes project.

**Anne-Marie Fuller** is a Feasta Trustee and steering group member of the Wellbeing Economy Alliance (WEAll) Ireland Hub and has a keen interest in Doughnut Economics and policy development.

**Mick Forde Bradley** is a Senior Executive Architect in the Housing Department of Limerick City and County Council. He is working on the short-term modular affordable rental transition ("SMART") Housing Programme - a key objective of the Limerick Mayoral Programme 2024-2029 to deliver 1,000's of Modular homes, address housing shortages with SMART housing on temporary sites, creating a transitional solution while permanent housing develops.

**Corrin Fox** is the co-founder and CPO of Kionnali Living Systems Ltd., a Scottish startup dedicated to developing sustainable, integrated building technologies. Kionnali's first product, LightForm, is a home designed to care for its users and the surrounding ecosystem, reflecting the company's mission to protect, adapt, and heal in a changing world.

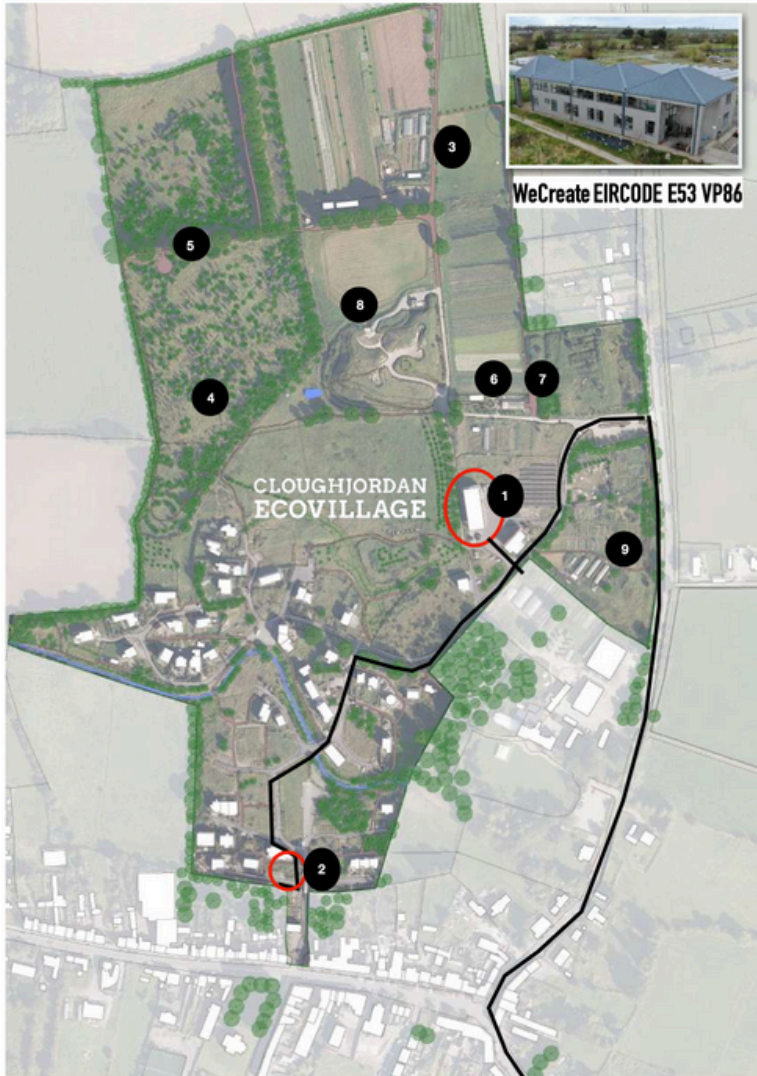
**Rob Cass**, Director of Irish Sustainable Homes, has 20 years of international experience. Upon returning to Ireland, he led the country's largest brownfield regeneration project to the planning stage. He now focuses on addressing the housing crisis through modular housing, revitalising vacant properties, and scaling sustainable supply chains to create a better future for communities and the next generation.

## The Wellbeing Economy Alliance

A Wellbeing Economy is an economy designed to serve people and the planet, not the other way around. Rather than treating economic growth as an end in and of itself and pursuing it at all costs, a Wellbeing Economy puts our human and planetary needs at the centre of its activities, ensuring that these needs are all equally met, by default.

The **WEAll Hub Ireland** is an All Ireland network of organisations working in partnership with the global **Wellbeing Economy Alliance** to help achieve an economy designed to serve people and the planet.

# HOUSING OURSELVES IN THE WELLBEING ECONOMY



## Directions to WeCreate: The Community Enterprise Centre

### CloughJordan Ecovillage, Tipperary.

CloughJordan is a village in rural North Tipperary, Ireland, it is the home of the Ecovillage. There is a train station with 2 trains a day from Dublin and Limerick see <https://www.irishrail.ie/>

By car take the M7 between Dublin and Limerick and get off at junction 23 - Moneygall. Go through the town, there is a turn to the right at the end of the main street which is signposted for CloughJordan. It is 10km from there.

When you get into CloughJordan there is a Centra on the left, turn right here and drive up Step Road for about 500m, on the left is the Ecovillage vehicle entrance. Drive in here, veer left and turn right after the red barn and park in the carpark beside the grey building, which is WeCreate. The entrance is at the south end of the building.

If you are going to Django's continue on the road, dear tight and take a left at the T junction, follow the road, veer right and left and you the green building in front of you is Django's, keep driving around to the front of the building where the entrance is.

1. WeCreate
2. Djangos Eco-Hostel / BnB
3. Community Farm CSA
4. Community Woodlands
5. Labyrinth
6. Cuin Beo - Community Seed Bank and Learning Area
7. Sensory Gardens
8. Community Amphitheatre
9. Research Gardens -@cjredgardens
10. Allotments

**Making Neighbourhoods**  
PUBLICATION

Coming soon  
[workhouseunion.com](http://workhouseunion.com)

